



POWER SYSTEMS

AESCULAP® Acculan 4

LOOK. FEEL. EXPERIENCE.

AESCULAP® – a B. Braun brand

B. Braun Medical N.V./S.A. | Lambroekstraat 5b | 1831 Diegem | Belgium
+32 (0)2 712 86 50 | customer care.be@bbraun.com | www.bbraun.be

The main product trademark "Aesculap" is a registered trademark of Aesculap AG.

Subject to technical changes. All rights reserved. This brochure may only be used for the exclusive purpose of obtaining information about our products. Reproduction in any form partial or otherwise is not permitted.

AESFULAP® Acculan 4

LOOK. FEEL. EXPERIENCE.



Acculan 4 – battery driven power system for Orthopaedics and Traumatology.

THE DIFFERENCE IS IN THE DETAIL

AESFULAP® was a pioneer in the introduction of non-sterile batteries. This avoids sterilization not only of the temperature-sensitive battery cells, but also of the equally vulnerable integrated control electronics. This, in turn, has a positive effect on the service life of the batteries and, therefore, on the system's operating costs. A concept that has been proven for years now. The opportunity to replace the battery at a fixed price and the further use of the electronics and housing helps to preserve the environment as well as to deliver financial benefits.

MECHANICAL PROCESSING

Thanks to the titanium housing and the ECCOS storage solution Acculan 4 is suitable for mechanical cleaning, even with alkaline cleaning media.

Rinsig adaptors for cleaning of lumens like canulation and saw blade coupling in the washer.

SERVICE LABEL

Regular servicing and preventive maintenance is essential to ensure the reliability of motor systems over a long service life. AESFULAP® is offering a full variety of different service solutions adapted to specific customer needs. The service label on each Acculan 4 machine clearly shows when the next preventive maintenance is due.

Acculan 4

LOOK. FEEL. EXPERIENCE.

As one of the leading suppliers of surgical motor systems AESFULAP® provides solutions for many indication areas.

Our philosophy is to develop well-designed systems to simplify the daily routine for the whole team involved in the sterile goods process.

Acculan 4 is a powerful and simple to use system which combines reliability, longevity and ergonomics.



AESCULAP® Acculan 4

LOOK. FEEL. EXPERIENCE.

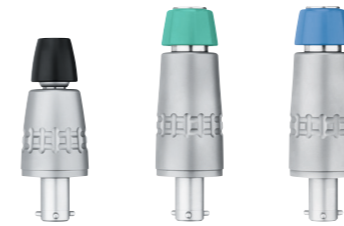


ATTACHMENTS

Attachments for acetabular reaming, intramedullary reaming, drilling, K-wire and small sagittal saw blades up to 50 mm length.

Easy identification of drill and reamer attachments through color coding of the unlocking sleeve:

- Drilling
- Intramedullary reaming
- Reaming



CHARGER

Charger with relevant status indicators for charge progress and battery status.

Battery status indicator informs automatically when battery should be replaced to ensure reliable operation of the system.



OPERATING ELEMENTS

Golden marked operating elements such as unlocking elements for saw blades and attachments.



Reamer

LOOK. FEEL. EXPERIENCE.
Rounded organic shape of the grip area. Handle incorporates the battery and avoids a bulky battery compartment.



AESCULAP® Acculan 4

LOOK. FEEL. EXPERIENCE.



KEYLESS SAW BLADE COUPLINGS

All saw blade couplings allow keyless saw blade insertion and release.

Sagittal saw blade coupling comes with a low profile design.

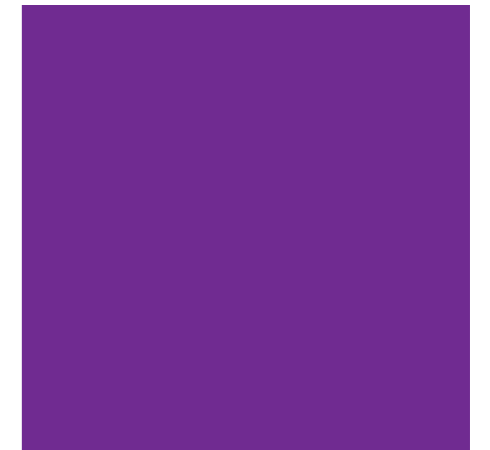
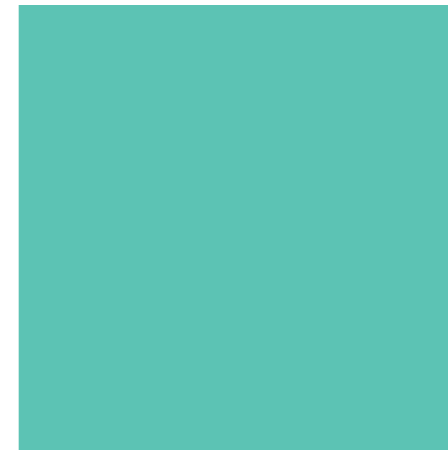
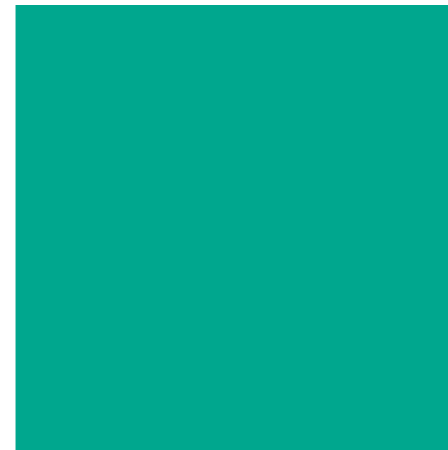
TURNABLE SAW HEAD

Saw head of sagittal saw GA331 can be keyless turned in steps of 45° to offer flexibility without compromises in ergonomics.



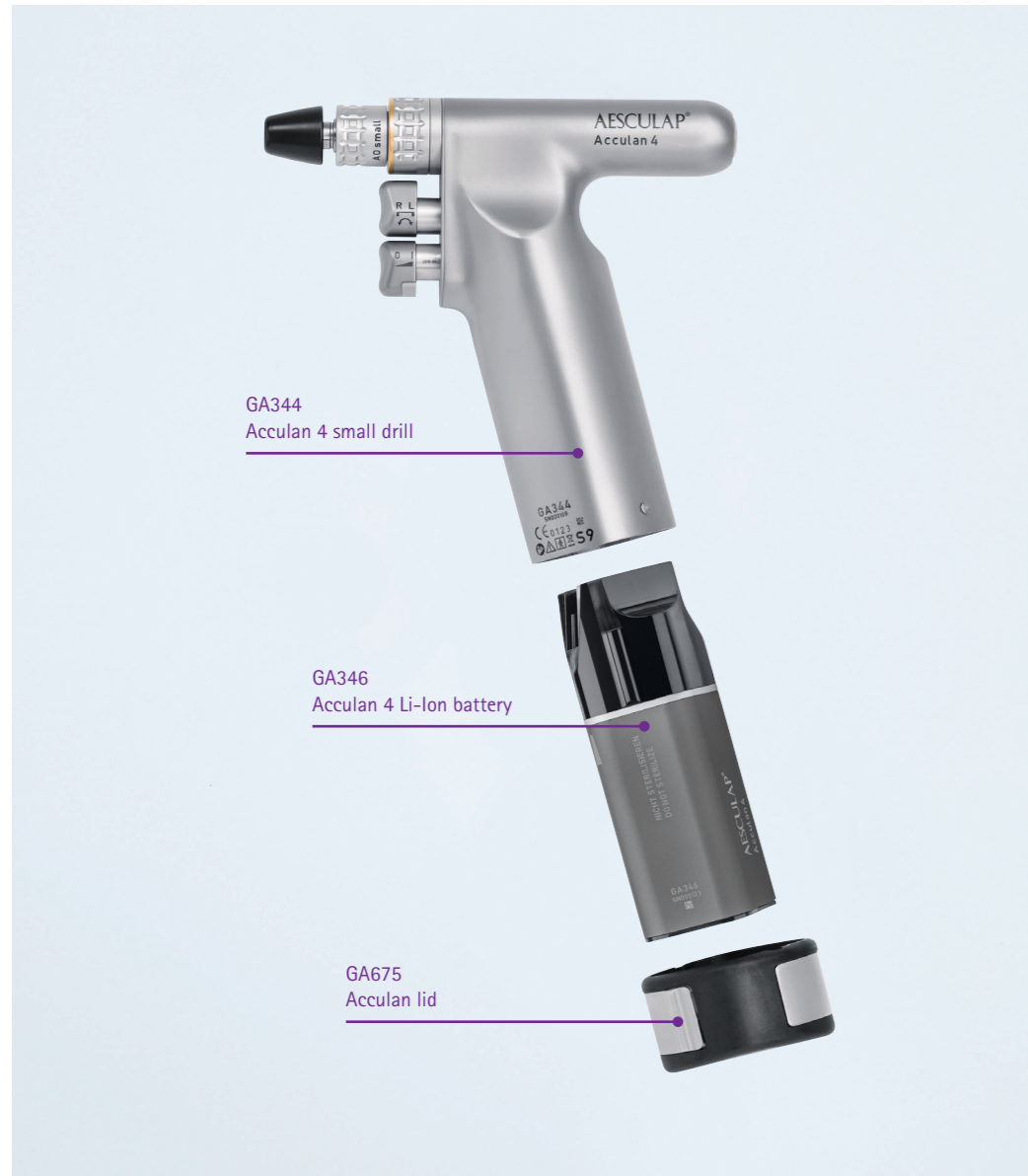
Saws

LOOK. FEEL. EXPERIENCE.
Different saws for a surgeon's
individual choice of handling

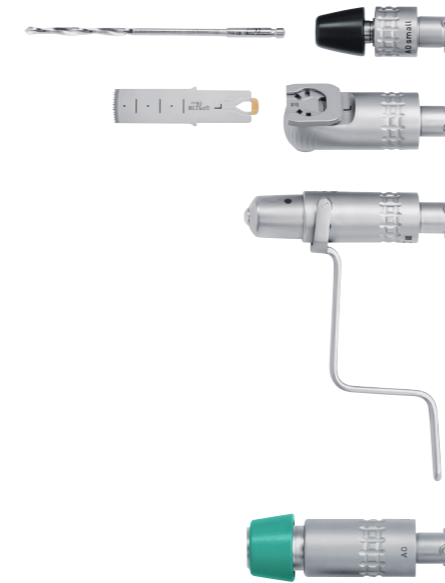


AESCULAP® Acculan 4

LOOK. FEEL. EXPERIENCE.



LOOK. FEEL. EXPERIENCE.
Due to the powerful motor the small drill can be used for small fragment Osteosynthesis as well as for reamed intramedullary nailing.



ATTACHMENTS

Wide range of attachments enable flexible usage of the small drill with common reaming and drilling tools.

Easy identification of drill and reamer attachments through color coding of the unlocking sleeve:

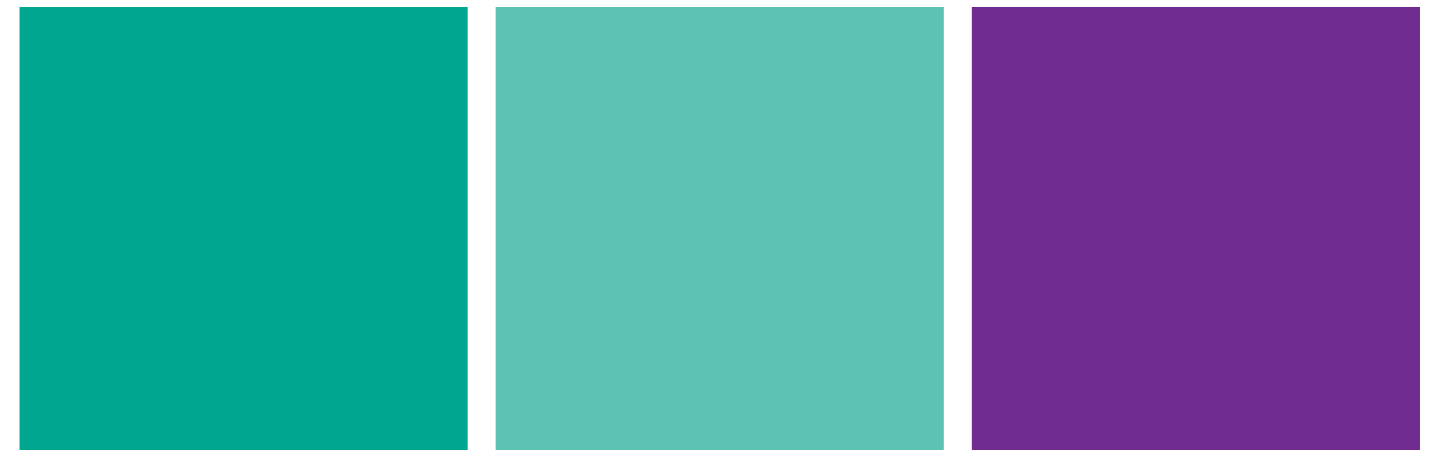
- Drilling
- Intramedullary reaming

SAWS

Sagittal saw attachment for saw blades with an effective length up to 50 mm.

Reciprocating saw attachment for saw blades with an effective length up to 33 mm.

Small Drill



AESCULAP® Acculan 4

SYSTEM OVERVIEW

CHARGER, BATTERIES AND LID	
GA320	Charger (w/o power cord)
GA346	Li-Ion battery short (for small drill GA344)
GA676	NiMH battery long
GA675	Lid
Acculan 4 SMALL DRILL AND ATTACHMENTS	
GA344	Small drill
GB870R	Reamer attachment large Jacobs chuck (0.5 – 7.4 mm)
GB871R	Intramedullary reamer attachment AO-large
GB872R	Intramedullary reamer attachment Hudson/Zimmer
GB878R	Drill attachment for Synthes radiolucent drive 511.300
GB881R	Drill attachment large Jacobs chuck (0.5 – 7.4 mm)
GB882R	Drill attachment small Jacobs chuck (0.5 – 4.0 mm)
GB884R	Drill attachment AO-small
GB886R	Drill attachment AESCULAP® hexagonal
GB887R	Drill attachment Dental shank
GB891R	Sagittal saw attachment
GB892R	Reciprocating saw attachment
GB894R	K-wire attachment (0.6 – 3.2 mm)
GB896R	Screw attachment AO-small
GB897R	Screw attachment AESCULAP® hexagonal



Acculan 4 LARGE HANDPIECES AND ATTACHMENTS	
GA330	Drill and reamer
GA331	Oscillating saw
GA334	Reciprocating saw
GA336	Oscillating saw straight
GB620R	Drill attachment keyless Jacobs chuck (0.5 – 7.4 mm)
GB621R	Drill attachment large Jacobs chuck (0.5 – 7.4 mm)
GB623R	Drill attachment AO-small
GB639R	Drill attachment small Jacobs chuck (0.5 – 4.0 mm)
GB641R	K-wire attachment (0.6 – 4.0 mm)
GB645R	Drill attachment for Synthes radiolucent drive 511.300
GB657R	Intramedullary reamer attachment AO-large
GB660R	Sagittal saw attachment
GB663R	Drill attachment trinkle
GB664R	Drill attachment AESCULAP® hexagonal
GB665R	Drill attachment Hudson/Zimmer
GB667R	Reamer attachment large Jacobs chuck
GB668R	Reamer attachment AO-large
GB669R	Reamer attachment Hudson/Zimmer
GB670R	Reamer attachment Harris

