

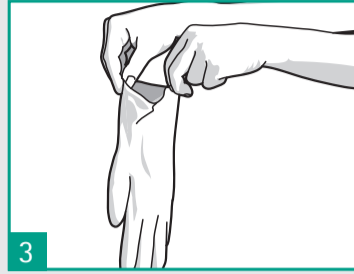
## HOW TO DON GLOVES?



1  
When the hand hygiene indication occurs before a contact requiring glove use, perform hand hygiene by rubbing with an alcohol-based handrub or by washing with soap and water.



2  
Take out a glove from its original box.



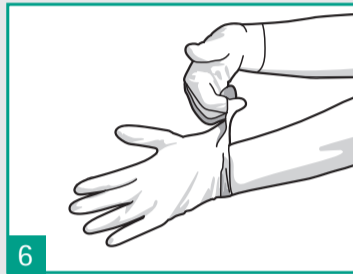
3  
Touch only a restricted surface of the glove corresponding to the wrist (at the top edge of the cuff).



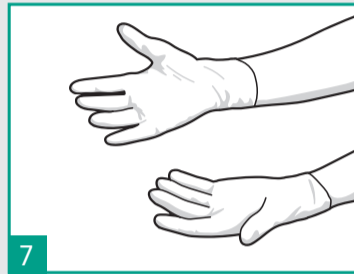
4  
Don the first glove.



5  
Take the second glove with the bare hand and touch only a restricted surface of glove corresponding to the wrist.

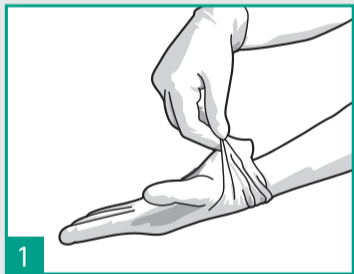


6  
To avoid touching the skin of the forearm with the gloved hand, turn the external surface of the glove to be donned on the folded fingers of the gloved hand, thus permitting to glove the second hand.

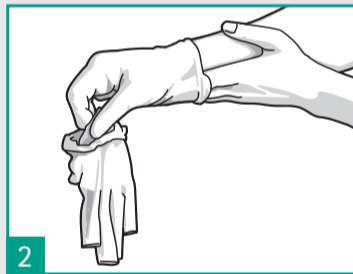


7  
Once gloved, hands should not touch anything else that is not defined by indications and conditions for glove use.

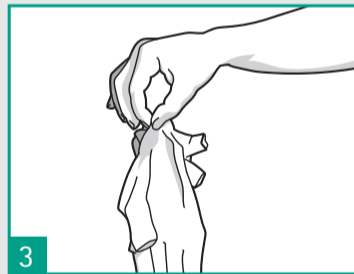
## HOW TO REMOVE GLOVES?



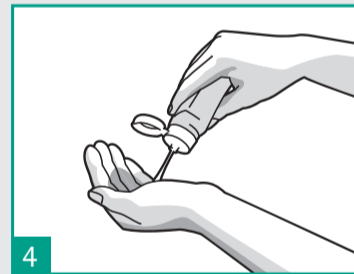
1  
Pinch one glove at the wrist level to remove it, without touching the skin of the forearm, and peel away from the hand, thus allowing the glove to turn inside out.



2  
Hold the removed glove in gloved hand and slide the fingers of the un-gloved hand inside between the glove and the wrist. Remove the second glove by rolling it down the hand and fold into first glove.

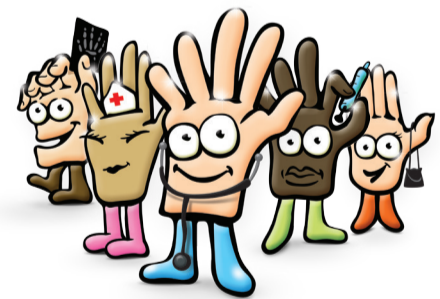


3  
Discard the removed gloves.



4  
Perform hand hygiene by rubbing with an alcohol-based handrub or by washing with soap and water.

JOIN THE HAND  
HYGIENE CAMPAIGN



# GLOVING PRACTICE

ACCORDING TO WHO GUIDELINES ON HAND HYGIENE IN HEALTH CARE