



POWER SYSTEMS

AESFULAP® – a B.Braun brand

B.Braun Medical N.V./S.A. | Lambroekstraat 5b | 1831 Diegem | Belgium
+32 (0)2 712 86 50 | customercare.be@bbraun.com | www.bbraun.be

Manufacturer acc. to MDD 93/42/EEC

The main product trademark "AESFULAP" is a registered trademark of Aesculap AG.

Subject to technical changes. All rights reserved. This brochure may only be used for the exclusive purpose of obtaining information about our products. Reproduction in any form partial or otherwise is not permitted.

AESFULAP® ELAN 4
PRECISION. PERFORMANCE. PLEASURE.

AESCULAP® ELAN 4

PRECISION. PERFORMANCE. PLEASURE.

Engineered in Germany.

As a surgeon you do the best job possible in order to restore your patients' quality of life, maintain their health or even save their lives, regardless of the constant pressure you are exposed to.

This responsibility made you a real perfectionist.

Peak performance, high precision and reliability are the claims you place upon yourself and anything that surrounds you. Because products that embody these values, support you in achieving your most ambitious goals.

Why should you accept compromises?

PRIVATE AT WORK

PRECISION PERFORMANCE PLEASURE

AESCULAP® ELAN 4

PRECISION. PERFORMANCE. PLEASURE.

Why did you choose the timepiece you are wearing? Because it is an artwork of accuracy, capturing value and eternal reliability? Do you appreciate how virtuously it is manufactured, even in the minutest detail? Did it become a part of you, hardly perceptible?

ELAN 4 aims to be the same – to meet the high demands in terms of precision, reliability and usability.

Will it convince you?



ERGONOMICS



INNOVATIVE GERMAN ENGINEERING:

- › New positioning of the motor before the angle, meaning there is no need for an angle gear or a motor coupling.

RESULT:

- › no couplings needed
- › handpieces become shorter and lighter
- › the angle does not get hot
- › sits comfortably in the hand
- › can be held more reliably and comfortably*

BENEFITS:

high-precision, convenient and reliable grip

AESCULAP® ELAN 4

PRECISION. PERFORMANCE. PLEASURE.

What are the features you decide upon when buying a car?

Certainly you require reliability and enough horsepower. A car needs to accelerate quickly when required, it needs to cruise smoothly on long journeys and has to take you to your destination quickly and safely.

Power and reliability. This is what you can expect of ELAN 4, too. ELAN 4 is our answer to raise the bar in terms of overall performance.

Get the speed you need.



HIGH-SPEED



INNOVATIVE GERMAN ENGINEERING:

- › integrated motors
- › on/off function integrated into the cable or hose to the motor coupling

RESULT:

The rotation speed is directly transferred, resulting in

- › very smooth running
- › no loss of power
- › high reliability
- › compact construction – no extra switch

BENEFITS:

quick, powerful and reliable work

AESCULAP® ELAN 4

PRECISION. PERFORMANCE. PLEASURE.

In our high-tech world, simplicity is a luxury – “ease of use” and “joy of use” are almost synonyms. It’s more fun when things just work intuitively, without the need for headscratching or guesswork. Just like a smart phone: you simply need to follow your intuition. The apps you prefer are clearly arranged on the home screen. Personalized technology.

The same is true of the ELAN 4. You can select the motor drive type you are used to. The systems are straightforward and operation is self-explanatory. The couplings work according to the plug and play principle and the burrs fit every length of handpiece. Work will be easier and finally: even more joyful.

A new experience.



TWO SYSTEMS



INNOVATIVE GERMAN ENGINEERING:

- › all couplings are plug and play compatible
- › standardised burr lengths and clear coding of burrs
- › all operating elements are marked gold

RESULT:

- › easy to use
- › streamlined surgical set with fewer components
- › handpiece will always contain the correct motor
- › self-explanatory
- › all types and sizes of burrs are available for all handpiece lengths

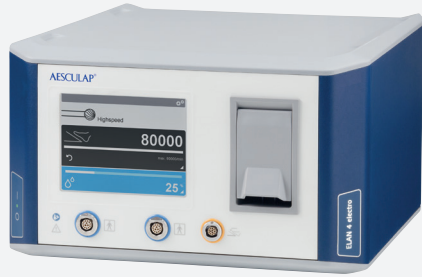
BENEFITS:

The system is a joy to work with because it is set up clearly and simply. Fewer components and a universal burr length offer savings potentials.

AESCLAP® ELAN 4 electro

PRECISION. PERFORMANCE. PLEASURE.

Engineered in Germany.



> GA800

ELAN 4 electro control unit



> TE730 5 m
> TE780 1.5 m
Power cord Europe



> GA808
Foot control



> GA810
Wireless foot control



> GA806
GB073R

Motor cable



> GA804
GB073R

Motor cable with hand switch



> GA805
GB073R

Motor cable with hand control



> GA822
GB076R

Perforator driver with Hudson coupling



> GA849
GB085R

Craniotome and multifunction handpiece (2-ring)



> GA824
GB077R

Low speed motor with Intra coupling

AESCULAP® ELAN 4 electro

PRECISION. PERFORMANCE. PLEASURE.

Engineered in Germany.



➤ **GA861**
GB083R

Handpiece
standard
(1-ring) L4

➤ **GA862**
GB083R

Handpiece
standard
(1-ring) L7

➤ **GA863**
GB083R

Handpiece
standard
(1-ring) L10

➤ **GA864**
GB083R

Handpiece
standard
(1-ring) L13



➤ **GA865**
GB083R

Handpiece
heavy duty
(2-ring) L7

➤ **GA866**
GB083R

Handpiece
heavy duty
(2-ring) L10

➤ **GA867**
GB083R

Handpiece
heavy duty
(2-ring) L13

➤ **GA868**
GB083R

Handpiece
heavy duty
(2-ring) L17

➤ **GA869**
GB083R

Handpiece
heavy duty
(2-ring) L22

AESCLAP® ELAN 4 electro

PRECISION. PERFORMANCE. PLEASURE.

Engineered in Germany.



➤ **GA860**
GB084R
 MIS handpiece



➤ **GB920R**
GB723R

MIS handpiece shaft, straight L10



➤ **GB921R**
GB723R

MIS handpiece shaft, curved L10



➤ **GB922R**
GB723R

MIS handpiece shaved, heavy curved L10



➤ **GB925R**
GB723R

MIS handpiece shaft, straight L13



➤ **GB926R**
GB723R

MIS handpiece shaft, curved L13



➤ **GB927R**
GB723R

MIS handpiece shaved, heavy curved L13



➤ **GA836**
GB086R

Micro sagittal saw



➤ **GA837**
GB087R

Micro reciprocating saw



➤ **GA831**
GB088R

Sagittal saw



➤ **GA832**
GB087R

Reciprocating saw



➤ **GA833**
GB087R

Transversal saw to be used with shafts GP580R, GP582R, GP586R, GP590R

AESCULAP® ELAN 4 ACCESSORIES

PRECISION. PERFORMANCE. PLEASURE.

Engineered in Germany.



> **GB861P**
GB727R
 Length reduction sleeve for 1-ring handpieces



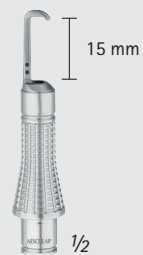
> **GB863P**
GB727R
 Length reduction sleeve for 2-ring handpieces



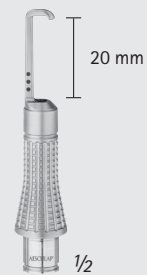
> **GB862P**
GB727R
 MIS sleeve for 1-ring handpieces



> **GB941R**
GB719R
 Fixed dura guard pediatric



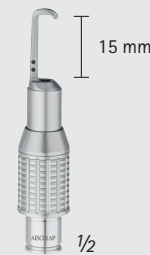
> **GB942R**
GB719R
 Fixed dura guard standard



> **GB943R**
GB719R
 Fixed dura guard long



> **GB945R**
GB719R
 Holding sleeve for craniotome and multifunction handpiece



> **GB947R**
GB719R
 Turnable dura guard standard



> **GA395SU**
 ② **sterile**
 Disposable tube set for irrigation pump



> **Disposable spray nozzles for ELAN 4**
 ② **sterile**
 GA258SU for saws
 GA259SU for craniotome attachments
 GA261SU for 1-ring handpiece L4
 GA262SU for 1-ring handpiece L7
 GA263SU for 1-ring handpiece L10
 GA264SU for 1-ring handpiece L13
 GA265SU for 2-ring handpiece L7
 GA266SU for 2-ring handpiece L10
 GA267SU for 2-ring handpiece L13
 GA268SU for 2-ring handpiece L17
 GA269SU for 2-ring handpiece L22
 GB796SU for MIS handpiece shaft L10
 GB797SU for MIS handpiece shaft L13



> **GB866R**
 Lateral burr guard for 1-ring handpiece and a maximum burr diameter of 4.5 mm

AESCULAP® ELAN 4 electro

PRECISION. PERFORMANCE. PLEASURE.

Engineered in Germany.



> GA844

GB482R

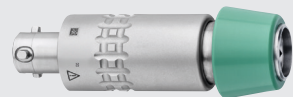
Drill



> GB870R

GB716R

Intramedullary reamer attachment Jacobs chuck
0.5 - 7.4 mm



> GB871R

GB716R

Intramedullary reamer attachment large AO chuck



> GB872R

GB716R

Intramedullary reamer attachment Hudson / Zimmer chuck



> GB891R

GB716R

Sagittal saw attachment



> GB892R

GB716R

Reciprocating saw attachment



> GB878R

GB716R

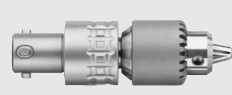
Adaptor for Synthes radiolucent drive 511.300



> GB881R

GB716R

Drill attachment Jacobs chuck
0.5 - 7.4 mm



> GB882R

GB716R

Drill attachment small Jacobs chuck
0.5 - 4 mm



> GB884R

GB716R

Drill attachment small AO chuck



> GB886R

GB716R

Drill attachment AESCULAP® hexagonal chuck



> GB887R

GB716R

Drill attachment dental shank



> GB894R

GB716R

K-wire attachment for K-wires from 0.6-3.2 mm



> GB896R

GB716R

Screw attachment small AO chuck



> GB897R

GB716R

Screw attachment AESCULAP® hexagonal chuck

AESCULAP® ELAN 4

PRECISION. PERFORMANCE. PLEASURE.

Engineered in Germany.

ENGINEERING EXPERTISE

ELAN 4 is produced using state-of-the-art manufacturing technology in Tuttlingen, Germany, at the Aesculap AG Innovation Factory, which was specifically built to produce motor and sterile container systems.

SIMPLE HANDLING

The clear and simple system set-up is a joy to work with. Every hand-piece always contains the correct motor, reducing the risk of errors.

MODERN HYGIENE MANAGEMENT

ELAN 4 meets the increasingly strict requirements and sets standards for the sterile processing of motor systems.

FEATURES ECONOMIC ADVANTAGES

The streamlined surgical set and the universal burr length help reducing inventory. As a result, there is a considerable saving potential.

AN EXPERIENCE

Powerful and smooth-running, it operates with high precision. Thanks to its ergonomic design, it lies comfortably in your hand.



ENGINEERING EXPERTISE.



SIMPLE HANDLING.



MODERN HYGIENE MANAGEMENT.



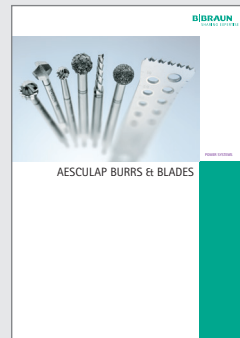
FEATURES ECONOMIC ADVANTAGES.

Main Catalogues

084002 Power Systems

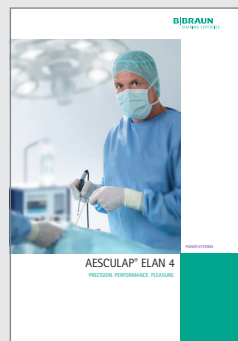


017599 Burs & Blades

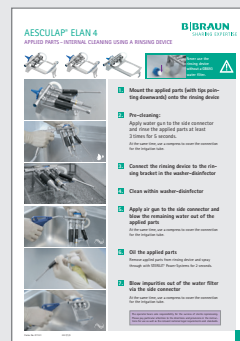


ELAN 4

071602 ELAN 4



071511 Mechanical Cleaning



012002 Manual Cleaning

